



# Alaska Farm to School:

## What Does the New Year Bring

Lyssa Frohling  
Farm to School Coordinator  
Division of Agriculture  
January 29<sup>th</sup>, 2019



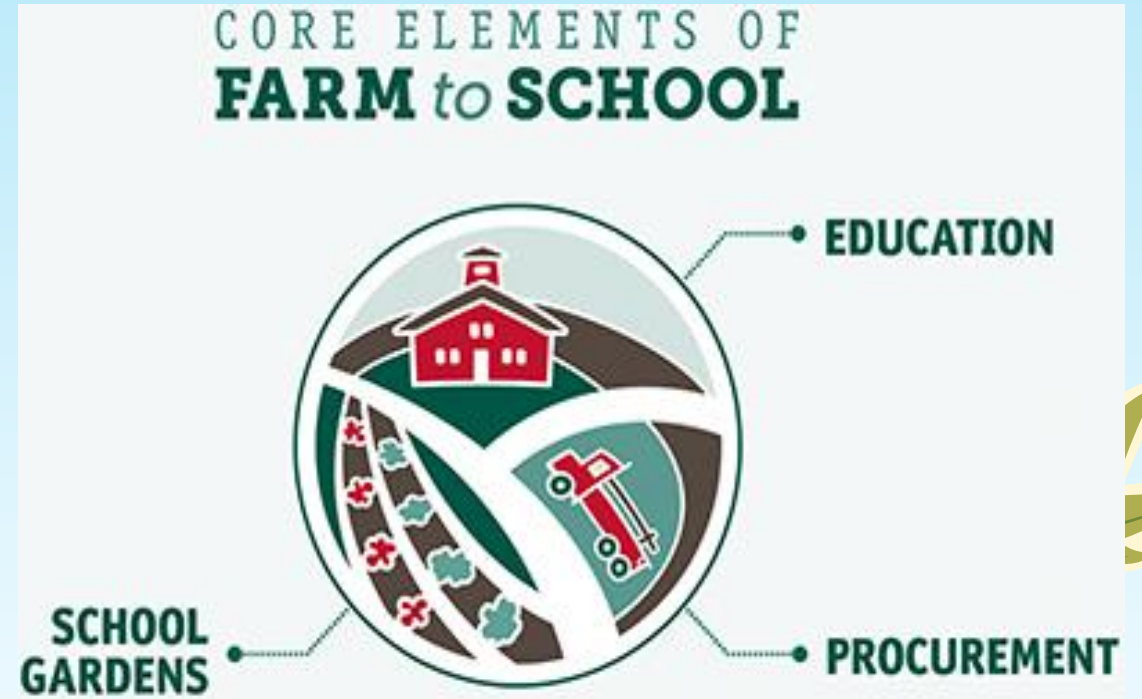
# Who is this strange woman in front of me?

- Lyssa Frohling  
lyssa.frohling@alaska.gov
- Come from a long line of farmers
- Weber State University 2015:  
Bachelors in Anthropology minor in  
GIS (I thought I was going to be an  
archaeologist)



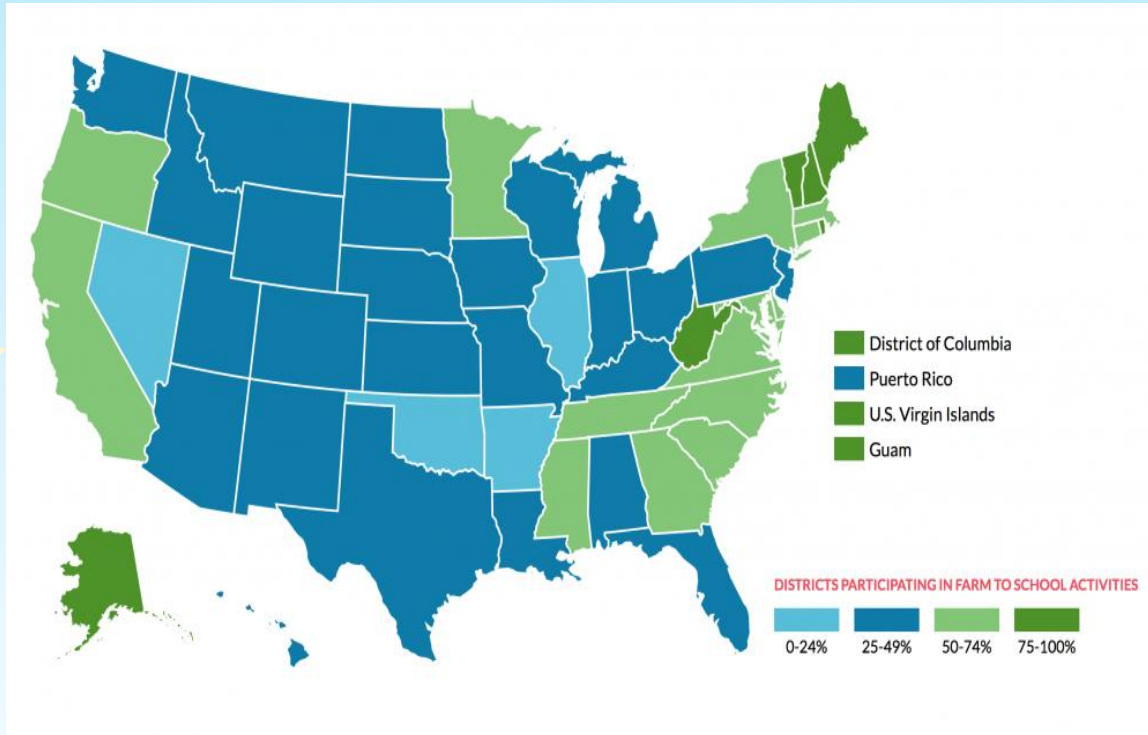
# Farm to School Goals

- Educate youth about healthy local food production and sustainability
- Provide healthy local meal options to our children in school meals
- Connect farmers with schools



# How does Alaska measure up?

## Quite well!



- Alaska 2015 rates: 76% participation in Farm to School activities
- 29 districts and 252 schools
- Indicated interest in scaling up activities or buying more produce in the future

# Upcoming Farm to School Census

- USDA census administered by the state
- Collect data on: who you buy from, how much you spend on local foods, what kinds of foods you have bought...etc.
- We need to keep celebrating our success!
- Your impact on this program is huge!

## FARM TO SCHOOL GROWS LOCAL ECONOMIES

In our case study model, for every additional dollar of final demand for farm to school farm products, an additional \$0.93 for related sectors is generated in MPLS and \$1.11 in Georgia.





Explore more in our "Economic Impacts of Farm to School" report at [farmtoschool.org](https://farmtoschool.org)





# Division of Agriculture Mission Statement

- All Alaskans have access to Alaska Grown food and products
  - All Alaskans value and choose Alaska Grown food and products
  - All Alaskan farmers have a reliable and consistent market
  - That every person, business, and organization in Alaska knows their role in supporting local agriculture
- 
- 





# The Farm to School Census and how you fit

- You have an impact on Alaskan Agriculture
- How do you support our mission at the Division of Agriculture?
- How do we measure success and celebrate that?



# Future funding

## F2S USDA grant

- June 2019
- Grassroots model development

## CNP support

- Thank you Jo Dawson!
- Support CNP programs and integration of F2S

## DHSS support

- Thank you Dianne Peck!
- Healthy curriculum development



# Farm to School Upcoming Events...



# Alaska Ag Day!

First Tuesday in May- May 7th





# Farm to Summer Week





# National Farm to School Month

October



Thank you!

